

HOUSE FOR ANISH KAPOOR AND FAMILY

Chelsea, London, UK
2008

FUNCTION:
Private House

CLIENT:
Anish Kapoor and family

CONTRACT VALUE:
£2.5m GBP

AREA:
600m²

COST/m²:
£4165 GBP/m²

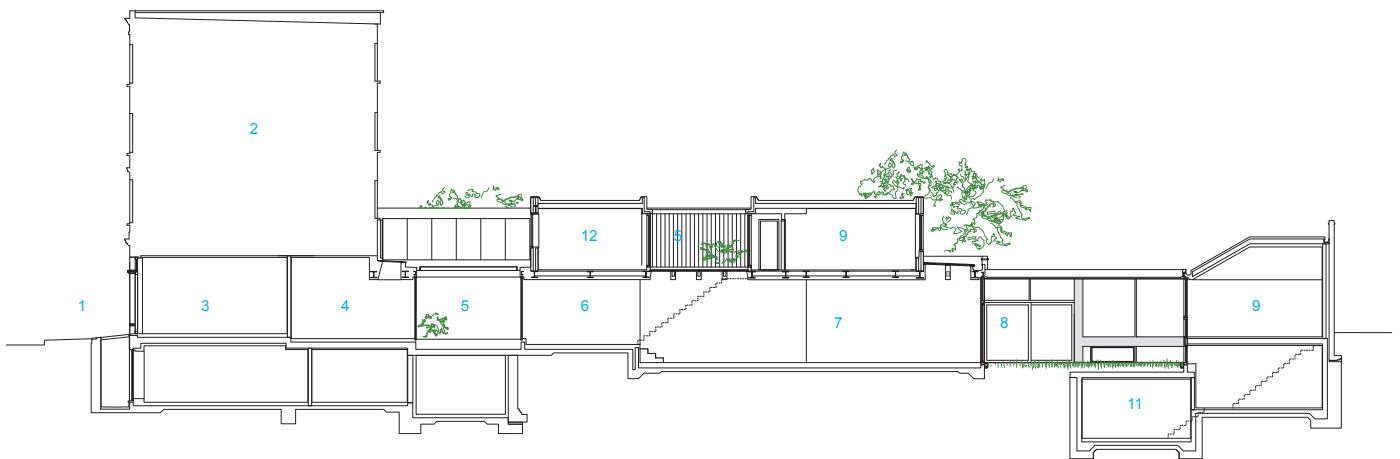
The house occupies an intriguing long and relatively narrow site in Chelsea, which begins at the main street beneath an apartment building, continues between tall windowless walls and ends at another street behind, a small paved court of houses. For our Clients, Anish and Susanne Kapoor and their family, the attraction of the site was its capacity to give a long continuous space on the ground floor for living, entertaining and displaying art. In our design this came into being as a series of places of different characters, arranged around sources of light and outlook and connected by shifting lines of sight and continuities of detail.

The choice of materials is unusual: polished stainless steel metalwork to reflect light, combined with two British stones, Hopton Wood and Mandale Fossil, that were used in British Modernist sculpture and architecture, and which both have a very beautiful figure.

Books and artworks are a significant part of the scheme and are given places in the plan where they take on a role of enriching and giving meaning to the spaces.



Entrance



LONG SECTION

1. Main entrance from street
2. Apartment building above
3. Garage
4. Kitchen
5. Courtyard
6. Dining room
7. Living room
8. Garden
9. Bedroom
10. Dressing room
11. Bathroom
12. Sitting room / Study

Section



The master bedroom



Main entrance



Living room



View from the courtyard